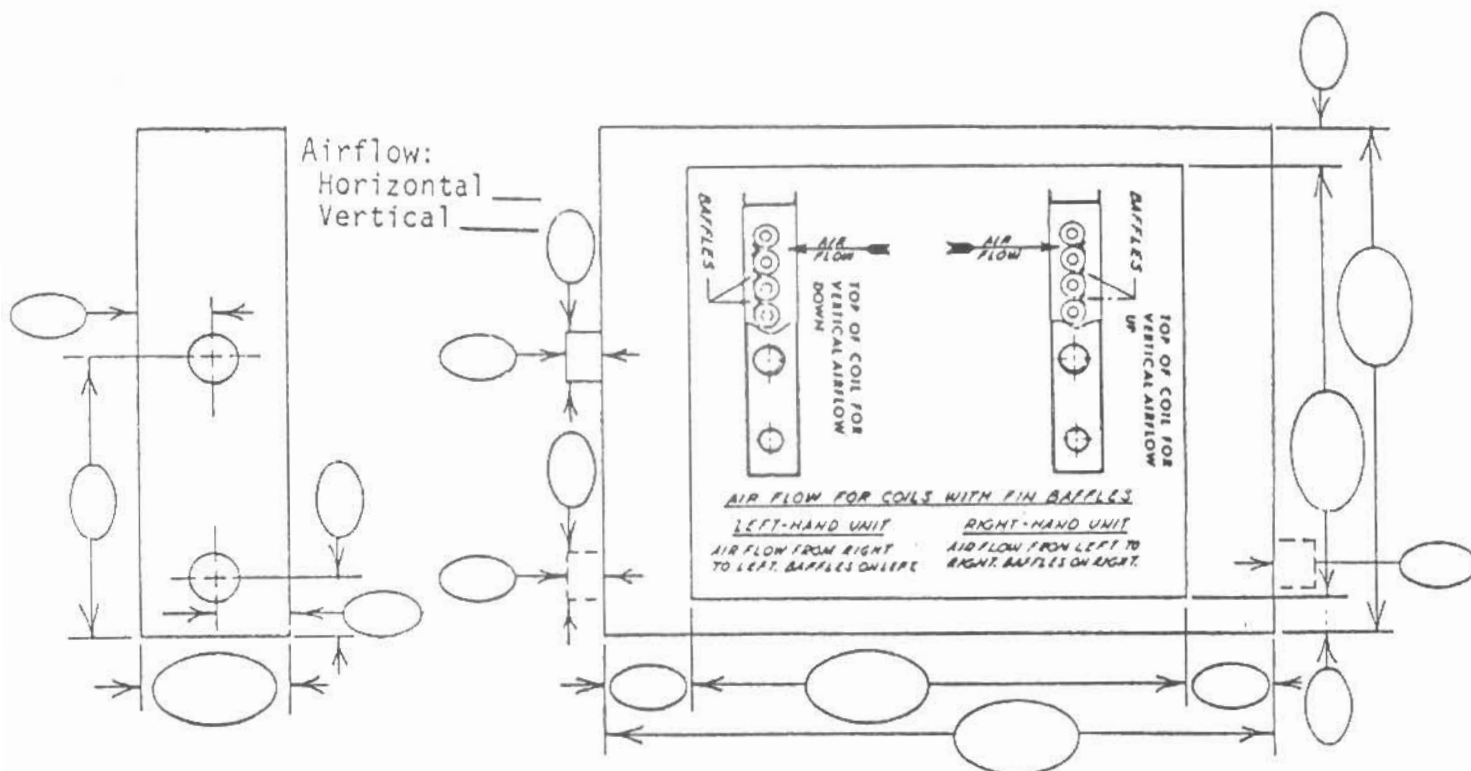


www.serviceprocess.net
 Service Process Equipment, Inc.
 PO Box 850908
 Mobile AL 36685-0908
 251.342.1313 • Fax 251.342.1377
 Email msellers@serviceprocess.net

AEROFIN

Replacement Steam Coil Worksheet Customer and Jobsite

Field Measurements - Fill In All Ovals
Draw Connection locations if different than those shown



Fins: (check one) - Helical Plate

Field Data:

Airflow (check one) - Horizontal Vertical

Number of:

Tubes going into each header _____ tubes in face _____ rows deep _____ fins per inch _____

Performance (if known)	Construction	Order Instructions for Aerofin Std Coil
MBH	Header Material	Type Coil
SCFM	Tube Material	Casing
EAT	Tube Wall Thickness	Tube Face
LAT	Fin Material	NTL
GPM	Casing Material	Series
Fluid	Connections: Flange <input type="checkbox"/> MPT <input type="checkbox"/> Butt Weld <input type="checkbox"/>	Circuit
Material	Joints: Brazed <input type="checkbox"/> Welded <input type="checkbox"/>	Fin Material
LFT		