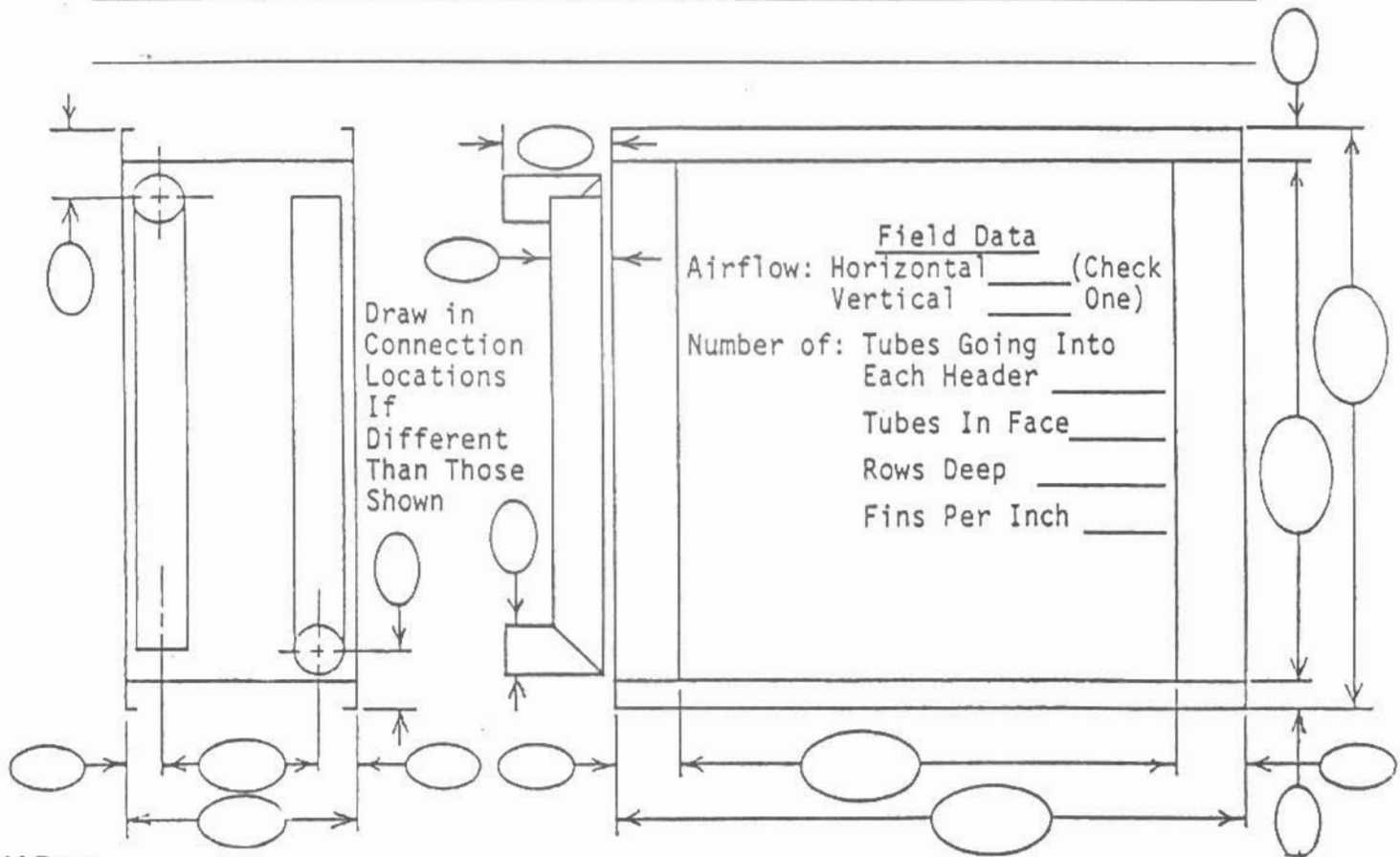


www.serviceprocess.net
 Service Process Equipment, Inc.
 PO Box 850908
 Mobile AL 36685-0908
 251.342.1313•Fax 251.342.1377
 Email msellers@serviceprocess.net

AEROFIN

Replacement Water and Glycol Coil Worksheet Customer and Jobsite

Field Measurements - Fill In All Ovals
Draw Connection locations if different than those shown



Field Data:

Airflow (check one) - Horizontal Vertical Fins: (check one) - Helical Plate

Number of:

Tubes going into each header _____ tubes in face _____ rows deep _____ fins per inch _____

Performance: (if known)	Construction	Orderin Instructions for Aerofin Std Coil
MBH	Header Material	Type Coil
SCFM	Tube OD: 1" or 5/8"	Casing
EAT	Tube Wall _____ Tube Material _____	Tube Face
LAT	Tube Joints: Brazed <input type="checkbox"/> Welded <input type="checkbox"/>	NTL
Steam Pressure	Inner Tubes: Yes <input type="checkbox"/> No <input type="checkbox"/>	Series
Steam Temperature	Fin Material _____ Casing Material _____	Rows
	Connections: Flange <input type="checkbox"/> MPT <input type="checkbox"/> Butt Weld <input type="checkbox"/>	Fin Material, Fin Baffles Yes <input type="checkbox"/> No <input type="checkbox"/>
	Return Connection on Same or Opposite End as supply _____	If yes, right hand <input type="checkbox"/> left hand <input type="checkbox"/>